



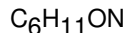
CAPROLACTAM

Specification number: 7850-86

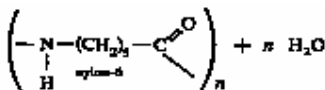
Date of issue: 15-May-2012

PRODUCT DESCRIPTION

Empirical formula:



Chemical structure :



Molecular weight:

113.16

Form:

Flake caprolactam

Aspect shape:

White irregular crystals of laminar shape

SPECIFICATION	Boarder Value**	Typical Value****	Method
Permanganate number in 3% solution, sec, min.:	10000	21000	GOST 7850-86
Permanganate Index, max.:	4	2.7	GOST 7850-86
Content of volatile bases, mmol/kg, max.:	0.4	0.3	GOST 7850-86
Moisture content, %, max.: <i>derived intermittently acc. to BASF's curve</i>	0.1	0.042	FISCHER
Crystallization temperature, °C, min:	68.8	69	GOST 7850-86
Color rate of caprolactam/water solution, with mass content 50%, Hazen unit., max.:	3	2.7	GOST 7850-86
Iron content, by weight, %, max.:	0.00002	0.015 PPM	GOST 7850-86
Content of cyclohexanoneoxime by weight, %, max.:	0.002		GOST 7850-86
Optical density of 50 % caprolactam solution, max.: (290 nm Absorbency)	0.04	0.024	GOST 7850-86
Acidity, Meq/kg, max.:	0.05	0.010	GOST 7850-86
Alkalinity, Meq/kg, max.:	0.1	0.012	GOST 7850-86
Ash content, PPM:	N/A	2.4	N/A
Water insolubles content, % weight, max.:	0.0001	1.5 PPM	GOST 7850-63

APPLICATION: Production of chemical fiber, polyamide resins.

PACKING: [25 Kg bags shrink-wrapped, palletized.](#)

<http://dhard.ucp-is.com/docs/specs/amides/cyclic/caprolactam/skn.stuffing/cpl.flake.skn.pallets.jpg>

(*) This specification refers to product from Kemerovo, Togliatti, Schekino and Grodno production units in C.I.S.

(**) Descriptions of Russian standards (GOST & TY) are available upon request.

(***) Boarder Values are minimum or maximum spec-s values, defined by production standards GOST or TY.

(****) Typical value is based on the analysis of total bulk production.

The above data have been compiled to the best of our knowledge on the basis of detailed tests and represent the present level of our many years of practical experience. No claims of liability or guarantee may be brought against us either from or in connection with the data sheet. Reprinting, even in part, is only with our consent.